

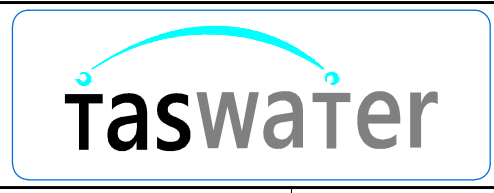
NOTES

1. VERTICAL GRAVITY SEPARATORS AND COLLECTION PIT TO BE SIZED ACCORDING TO RATE OF INFLOW. (REFER TO MANUFACTURERS SPECIFICATIONS)
2. ONLY NON EMULSIFYING TYPE PUMPS MAY BE USED FOR PUMPING OILS, HYDROCARBONS AND GREASY WASTE.
3. VERTICAL GRAVITY SEPARATORS ARE TO DISCHARGE THROUGH A TRADE WASTE SAMPLING POINT.
4. ALL MEASUREMENTS SHOWN ARE IN MILLIMETRES.
5. SILT SUMPS ARE NOT TO BE USED AS COLLECTION/PUMP PITS.
6. THE CAPACITY OF THE HOLDING PIT TO BE SIZED IN ACCORDANCE WITH THE PRE-TREATMENT DEVICE.

**THESE STANDARD DRAWINGS ARE PROVIDED AS A GUIDE.
 THE DESIGNER SHOULD ENSURE THAT THE PRETREATMENT SOLUTION IS
 DESIGNED TO ENSURE COMPLIANCE WITH TASWATER DISCHARGE QUALITY
 REQUIREMENTS AND ALL OTHER REGULATORY REQUIREMENTS**

TO BE READ IN CONJUNCTION WITH TASWATER PRETREATMENT GUIDELINES

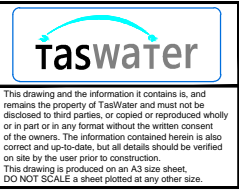
Revision Notes				
Rev.	1	Date	13/11/19	Approved
				Greg Cooper
1 - GENERAL UPDATE. SEE HPE RECORD NO. 19/136338				
B - INITIAL ISSUE				



Scale	NTS
Datum	-
Sheet Size	A3
References	

Drawn	PH	24/9/2015
Designed	GC	24/9/2015
Verified	AD	6/10/2015
Project No.	-	Discipline
Vault Folder	© 2015	
HPRM File Ref.	T15/161-002-0001	

DRAWING ISSUE
NOT FOR CONSTRUCTION



TASWATER STANDARD DRAWING			
TRADE WASTE TYPICAL DRAWING			
VERTICAL GRAVITY SEPARATOR (VGS)			
TASMANIAN WATER & SEWAGE CORPORATION PTY LTD ABN: 47 162220 653		Sheet Number	REVISION
		TWS-C-0001	5 1