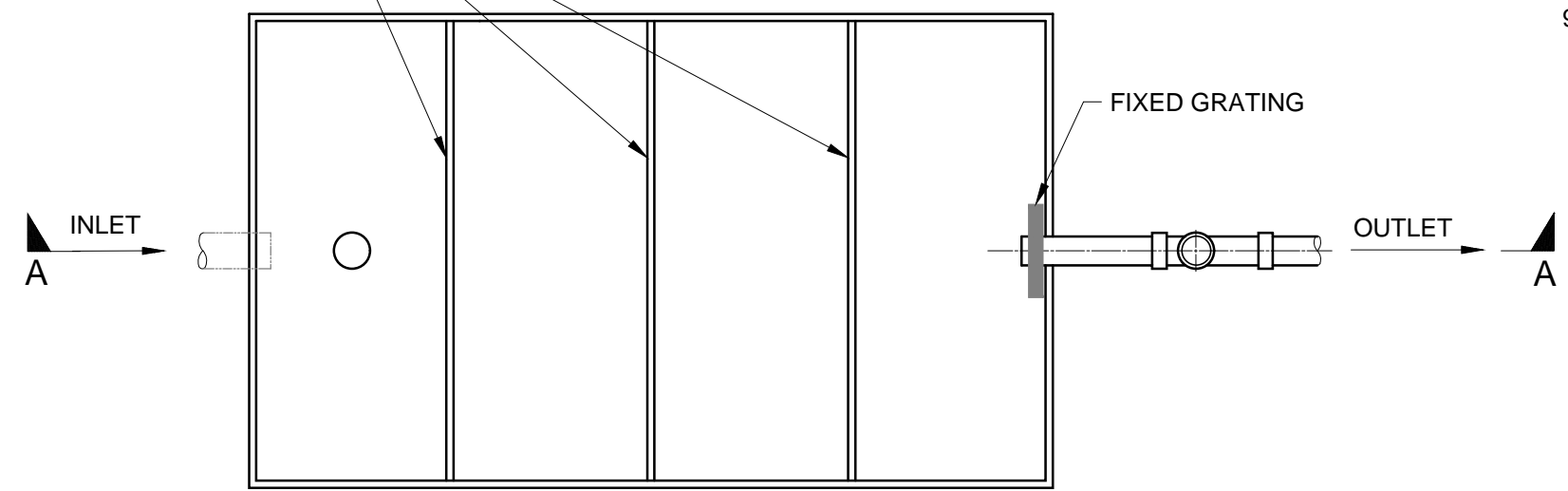


SECTION A

MARBLE CHIP LEVEL 60%



PLAN
(COVER REMOVED)

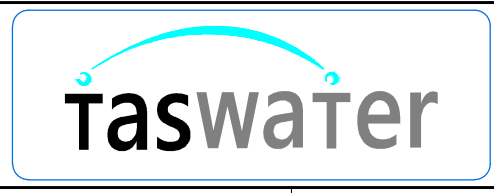
NOTES

1. THE INTERNAL SURFACES MUST BE ACID RESISTANT.
2. THE INTERNAL SURFACE MUST BE AN INTEGRAL PART OF THE WALL AND BASE.
3. THE NEUTRALISING TANK IS TO BE LOCATED IN A POSITION SO AS TO PROVIDE READY ACCESS FOR MAINTENANCE AND INSPECTION PURPOSES.
4. WHERE A NEUTRALISING TANK IS TO BE INSTALLED OUTSIDE A BUILDING, CONSIDERATION SHOULD BE GIVEN TO FITTING AIRTIGHT COVERS, OF APPROPRIATE STRUCTURAL STRENGTH FOR WHERE PEDESTRIAN OR VEHICULAR TRAFFIC IS LIKELY, VENTING THE CHAMBER
5. THE pH OF DISCHARGE MUST BE BETWEEN 6.0 AND 10.0.
6. THE 3 BAFFLES MUST BE EQUALLY SPACED THROUGH THE TANK LENGTH.
7. THE SIZE OF THE MARBLE CHIPS SHALL BE WITHIN 40mm AND 60mm RANGE.
8. THE OUTLET MUST BE CONNECTED TO A DISCONNECTOR GULLY FITTED WITH LOOSE FITTING GRATE OR SCREWED CAP.
9. ALL MEASUREMENTS SHOWN ARE IN MILLIMETRES.

**THESE STANDARD DRAWINGS ARE PROVIDED AS A GUIDE.
THE DESIGNER SHOULD ENSURE THAT THE PRETREATMENT SOLUTION IS
DESIGNED TO ENSURE COMPLIANCE WITH TASWATER DISCHARGE QUALITY
REQUIREMENTS AND ALL OTHER REGULATORY REQUIREMENTS**

TO BE READ IN CONJUNCTION WITH TASWATER PRETREATMENT GUIDELINES

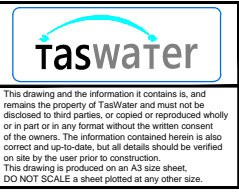
Revision Notes				
1 - GENERAL UPDATE. SEE HPE RECORD NO. 19/136338				
B - INITIAL ISSUE				
Rev.	1	Date	13/11/19	Approved
			Greg Cooper	



Scale	NTS
Datum	-
Sheet Size	A3
References	

Drawn	PH	24/9/2015
Designed	GC	24/9/2015
Verified	AD	6/10/2015
Project No.	-	Discipline
Vault Folder	© 2015	
HPRM File Ref.	T15/161-002-0001	

DRAWING ISSUE
NOT FOR CONSTRUCTION



TASWATER STANDARD DRAWING			
TRADE WASTE TYPICAL DRAWING			
NEUTRALISING TANK			
TASMANIAN WATER & SEWAGE CORPORATION PTY LTD ABN: 47 162220 653		Sheet Number	REVISION
		TWS-C-0001	8 1