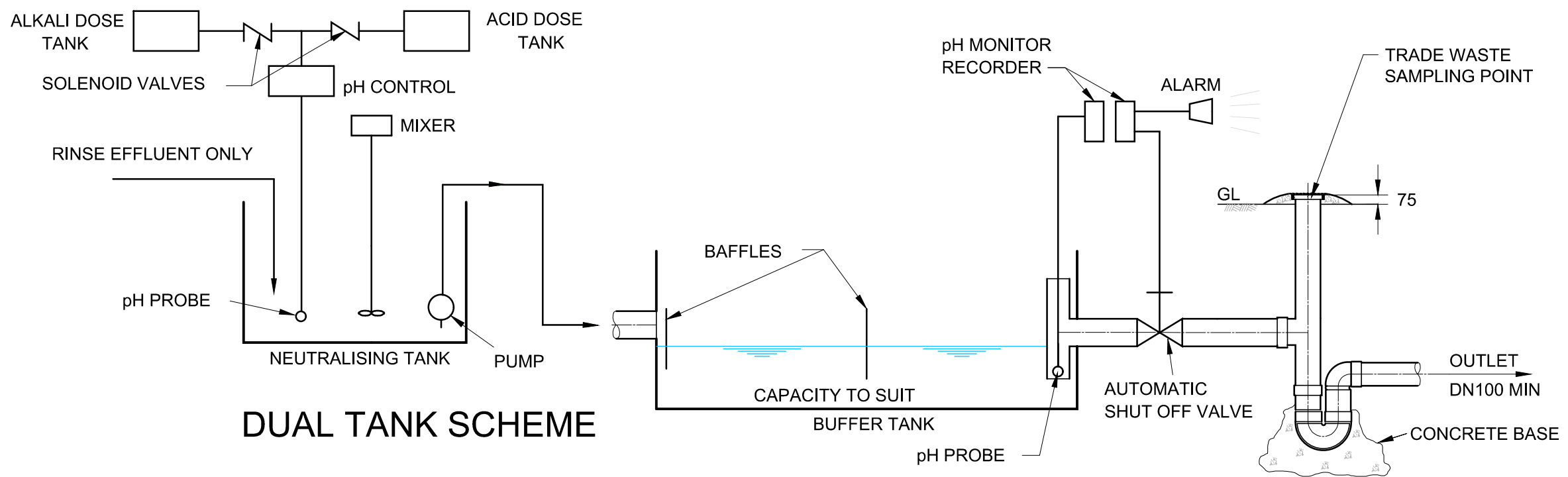


**SINGLE TANK SCHEME**

**NOTES**

1. THE TREATMENT SYSTEMS ILLUSTRATED ON THIS PLAN ARE INTENDED AS A GUIDE FOR PRE-TREATMENT OF METAL FINISHING AND OTHER SIMILAR PROCESSES.
2. AUTOMATIC VALVES AND pH PROBES MUST BE MAINTAINED TO MANUFACTURERS' SPECIFICATION.
3. ALL TANKS REQUIRE OVERFLOWS TO SELF-CONTAINED STORAGE.
4. THE INNER SURFACES OF THE TANKS TO BE ACID RESISTANT.
5. CONTROLLED PUMP OR GRAVITY DISCHARGE IS PERMITTED.
6. THE pH OF DISCHARGE MUST BE BETWEEN 6.0 AND 10.0.
7. ALL MEASUREMENTS SHOWN ARE IN MILLIMETRES.



**DUAL TANK SCHEME**

**THESE STANDARD DRAWINGS ARE PROVIDED AS A GUIDE. THE DESIGNER SHOULD ENSURE THAT THE PRETREATMENT SOLUTION IS DESIGNED TO ENSURE COMPLIANCE WITH TASWATER DISCHARGE QUALITY REQUIREMENTS AND ALL OTHER REGULATORY REQUIREMENTS**

**TO BE READ IN CONJUNCTION WITH TASWATER PRETREATMENT GUIDELINES**

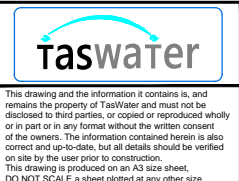
Revision Notes				
1 - GENERAL UPDATE. SEE HPE RECORD NO. 19/136338				
B - INITIAL ISSUE				
Rev.	1	Date	13/11/19	Approved
			Greg Cooper	



Scale	NTS
Datum	-
Sheet Size	A3
References	

Drawn	PH	24/9/2015
Designed	GC	24/9/2015
Verified	AD	6/10/2015
Project No.	-	Discipline
Vault Folder	© 2015	
HPRM File Ref.	T15/161-002-0001	

**NOT FOR CONSTRUCTION**



TASWATER STANDARD DRAWING		
TRADE WASTE TYPICAL DRAWING		
NEUTRALISER UNIT		
TASMANIAN WATER & SEWAGE CORPORATION PTY LTD	ABN: 47 162220 653	Sheet Number
TWS-C-0001		9
		REVISION
		1